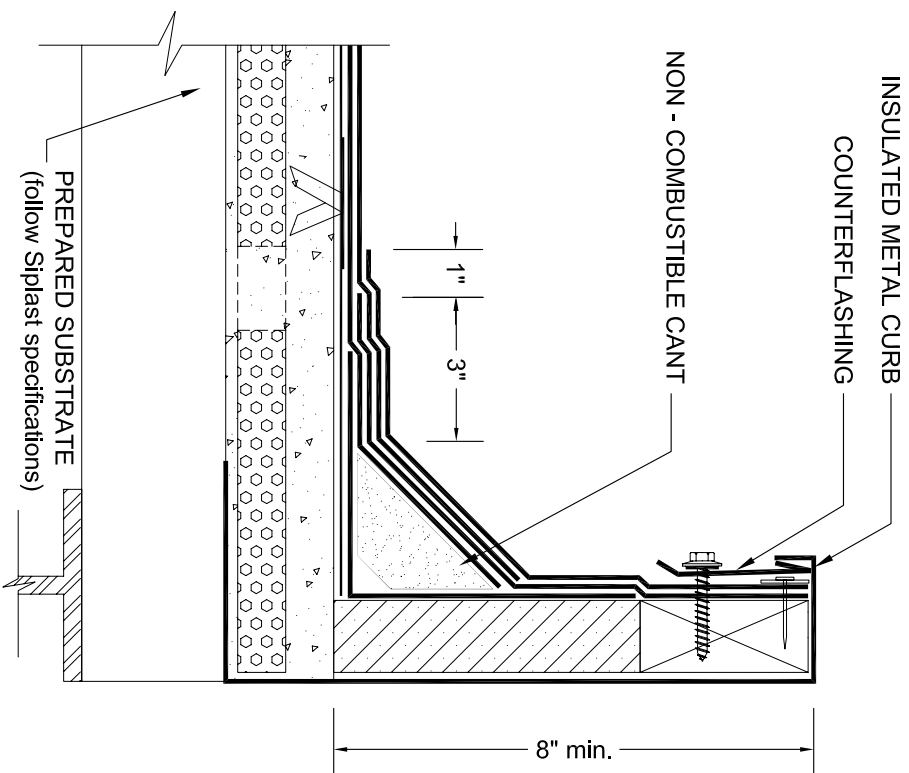
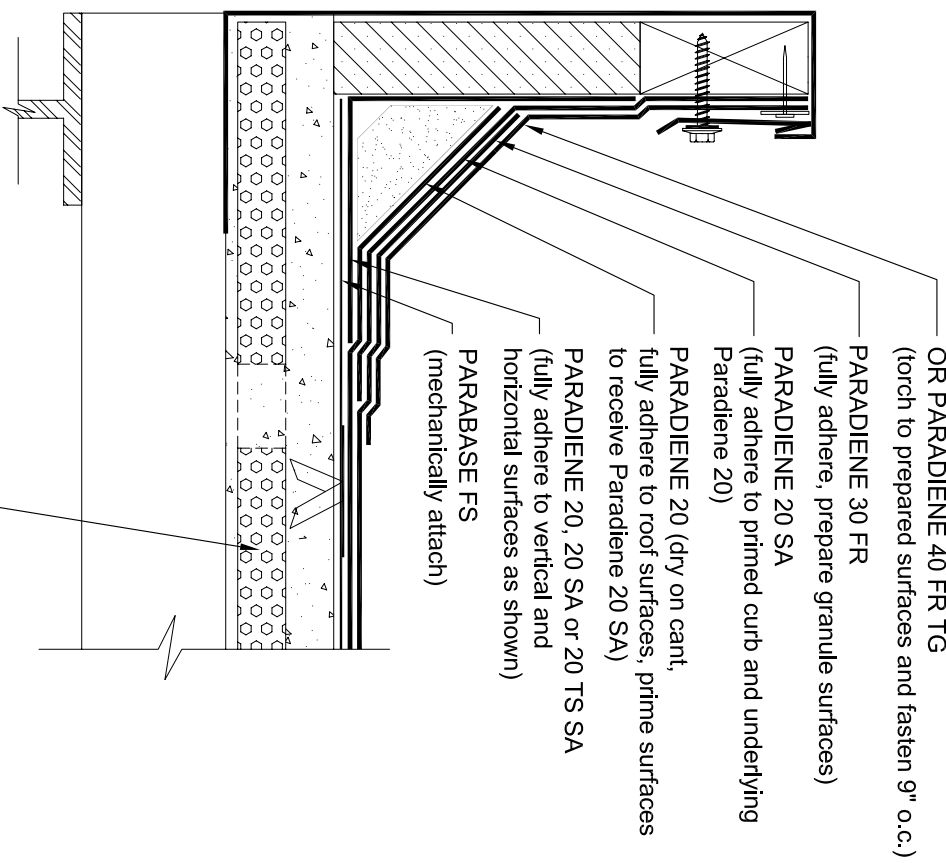


HVAC CURRB



NVS LIGHTWEIGHT INSULATING CONCRETE SYSTEM



- VERAL, PARAFOR 50 TG, PARAFOR 30 TG, OR PARADIENE 40 FR TG (torch to prepared surfaces and fasten 9" o.c.)
- PARADIENE 30 FR (fully adhere, prepare granule surfaces)
- PARADIENE 20 SA (fully adhere to primed curb and underlying Paradiene 20)
- PARADIENE 20 (dry on cant, fully adhere to roof surfaces, prime surfaces to receive Paradiene 20 SA)
- PARADIENE 20, 20 SA or 20 TS SA (fully adhere to vertical and horizontal surfaces as shown)
- PARABASE FS (mechanically attach)

- NOTES:
1. ONE OF THE FOLLOWING PRIMERS: PA-1125, PA-917LS, TA-119, OR TA-325 IS REQUIRED WHERE PRIMER IS INDICATED. CONTACT SIPLAST FOR SPECIFIC REQUIREMENTS.
 2. PREPARE GRANULE SURFACES UNDER FLASHING BY TORCH PREPARATION.
 3. THE CARPENTRY AND METAL WORK SHOWN DEPICTS SHOP FABRICATION AND JOB-SITE ASSEMBLY. THESE COMPONENTS SHOULD BE DESIGNED/FABRICATED/INSTALLED ACCORDING TO GENERALLY ACCEPTED INDUSTRY PRACTICES, STANDARDS, AND APPROVALS.
 4. DISSIMILAR METAL TYPES SUBJECT TO ELECTROLYTIC REACTION SHOULD BE PHYSICALLY SEPARATED.
 5. REQUIREMENTS AND RECOMMENDATIONS DETAILED IN SIPLAST SPECIFICATIONS SHALL APPLY IN ADDITION TO THE ABOVE DRAWING.

CAUTION: SIPLAST RECOMMENDS THAT ALL PRACTICES PERTAINING TO NRCA CERTA GUIDELINES BE FOLLOWED WHEN TORCHING METHODS ARE EMPLOYED. THIS INCLUDES PERFORMING A FIRE WATCH FOLLOWING ANY TORCH APPLICATIONS. ALWAYS HAVE APPROVED FIRE-EXTINGUISHING EQUIPMENT NEARBY.

N.T.S.



Siplast - 1000 East Rochelle Boulevard - Irving, Texas - 75062-3940
 (800) 922-8800 FAX: (469) 995-2206 www.siplast.com

Ref. #: 2031nbC2
 Date: 10.20.08