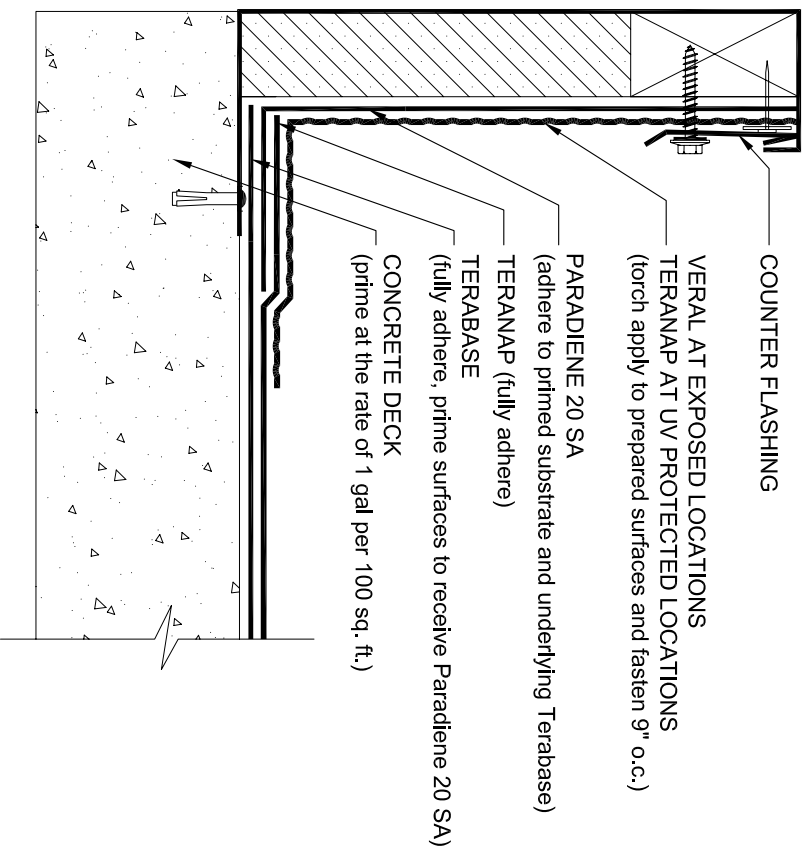
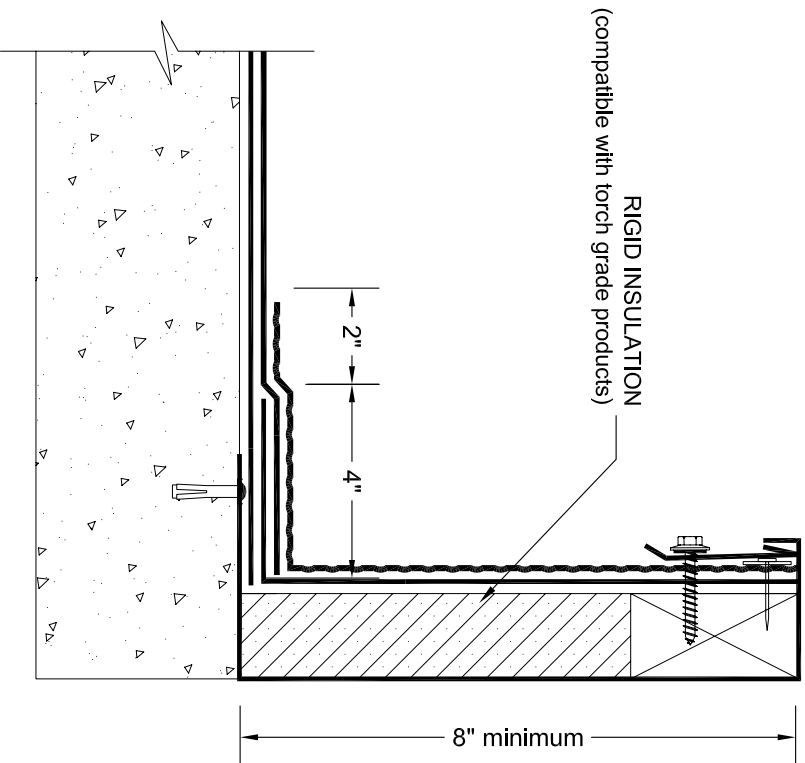


HVAC CURRB

(shown without protection system)



- NOTES:
1. ONE OF THE FOLLOWING PRIMERS: PA-1125, PA-917LS, TA-119, OR TA-325 IS REQUIRED WHERE PRIMER IS INDICATED. CONTACT SIPLAST FOR SPECIFIC REQUIREMENTS.
 2. THE CURB UNIT, COMPONENTS AND INSTALLATION GUIDELINES ARE SUPPLIED BY THE CURB MANUFACTURER.
 3. DISSIMILAR METAL TYPES SUBJECT TO ELECTROLYTIC REACTION SHOULD BE PHYSICALLY SEPARATED.
 4. REQUIREMENTS AND RECOMMENDATIONS DETAILED IN SIPLAST SPECIFICATIONS SHALL APPLY IN ADDITION TO THE ABOVE DRAWING.
 5. CONSULT TERANAP SPECIFICATION PLATES FOR OVERBURDEN/PROTECTION SYSTEM OPTIONS.

CAUTION: SIPLAST RECOMMENDS THAT ALL PRACTICES PERTAINING TO NRCA CERTA GUIDELINES BE FOLLOWED WHEN TORCHING METHODS ARE EMPLOYED. THIS INCLUDES PERFORMING A FIRE WATCH FOLLOWING ANY TORCH APPLICATIONS. ALWAYS HAVE APPROVED FIRE-EXTINGUISHING EQUIPMENT NEARBY.

N.T.S.



Siplast - 1000 East Rochelle Boulevard - Irving, Texas - 75062-3940
(800) 922-8800 FAX: (469) 995-2206 www.siplast.com

Ref. #: TN-C2
Date: 10.28.08