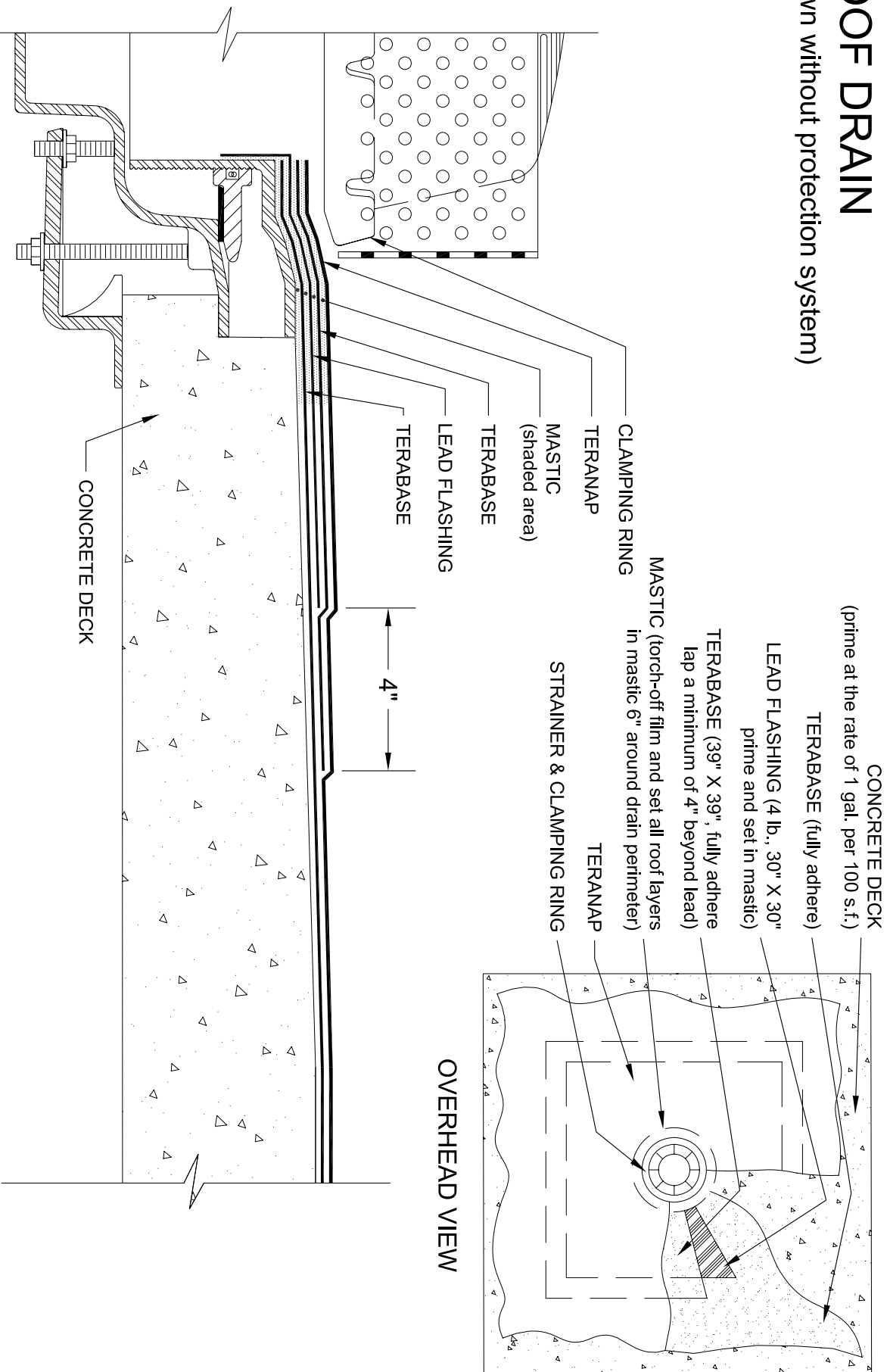


# ROOF DRAIN

(shown without protection system)



- NOTES:
1. PA-1021 PLASTIC CEMENT AND PA-1125 OR PA-917 LS PRIMER ARE REQUIRED WHERE MASTIC AND PRIMER ARE INDICATED.
  2. ROOF DRAIN COMPONENTS AND INSTALLATION GUIDELINES ARE SUPPLIED BY THE DRAIN MANUFACTURER.
  3. REQUIREMENTS AND RECOMMENDATIONS DETAILED IN SIPLAST SPECIFICATIONS SHALL APPLY IN ADDITION TO THE ABOVE DRAWING.
  4. CONSULT TERANAP SPECIFICATION PLATES FOR OVERBURDEN/PROTECTION SYSTEM OPTIONS.
- CAUTION: SIPLAST RECOMMENDS THAT ALL PRACTICES PERTAINING TO NRCA CERTA GUIDELINES BE FOLLOWED WHEN TORCHING METHODS ARE EMPLOYED. THIS INCLUDES PERFORMING A FIRE WATCH FOLLOWING ANY TORCH APPLICATIONS. ALWAYS HAVE APPROVED FIRE-EXTINGUISHING EQUIPMENT NEARBY.

N.T.S.



Siplast - 1000 East Rochelle Boulevard - Irving, Texas - 75062-3940  
 (800) 922-8800 FAX: (469) 995-2206 www.siplast.com

Ref. #: TN-D1  
 Date: 10.28.08